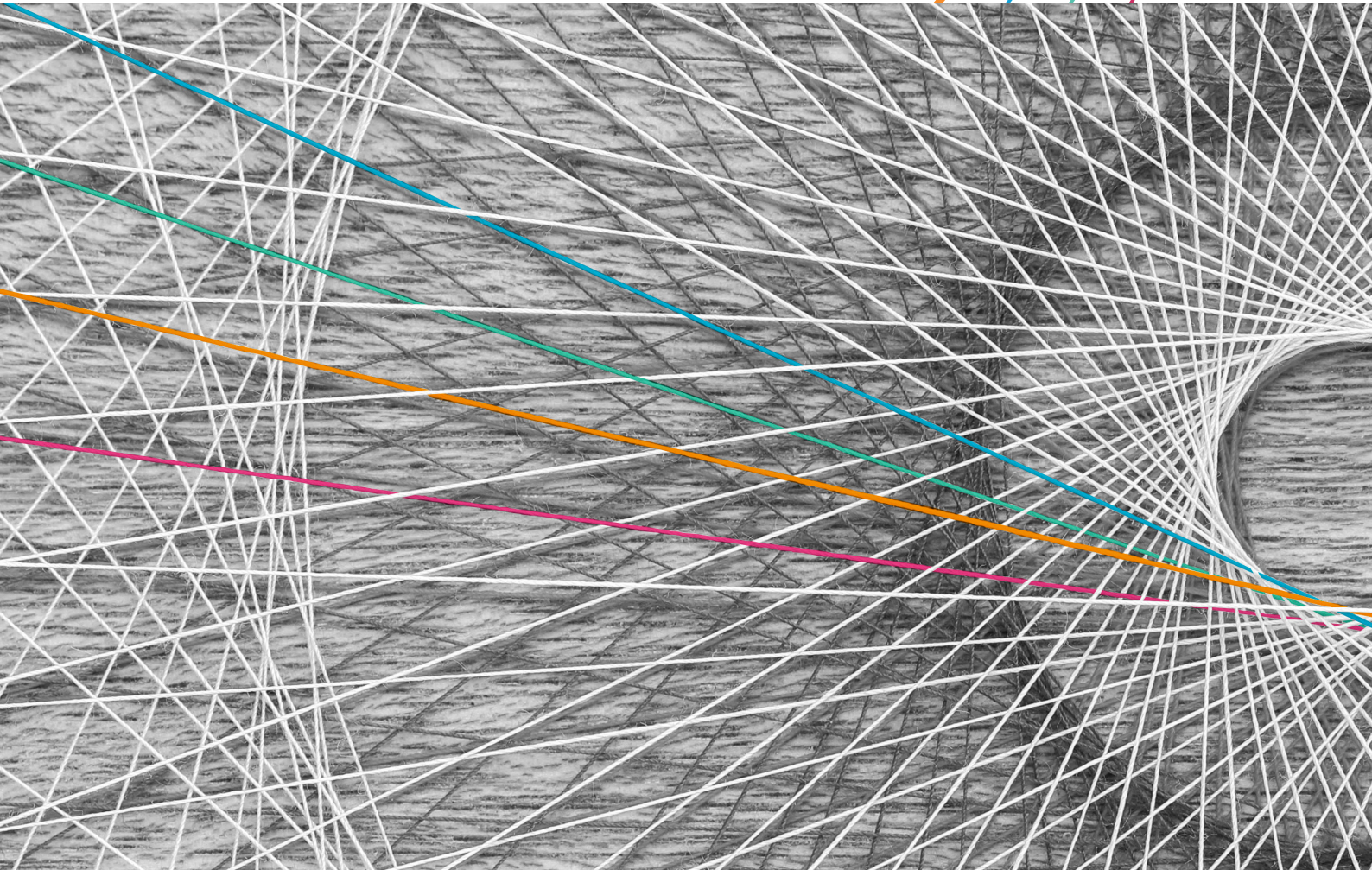


NETWORKS

Network Capacity Management

# Mobile Forecast



**DETECON**  
CONSULTING

## The Features

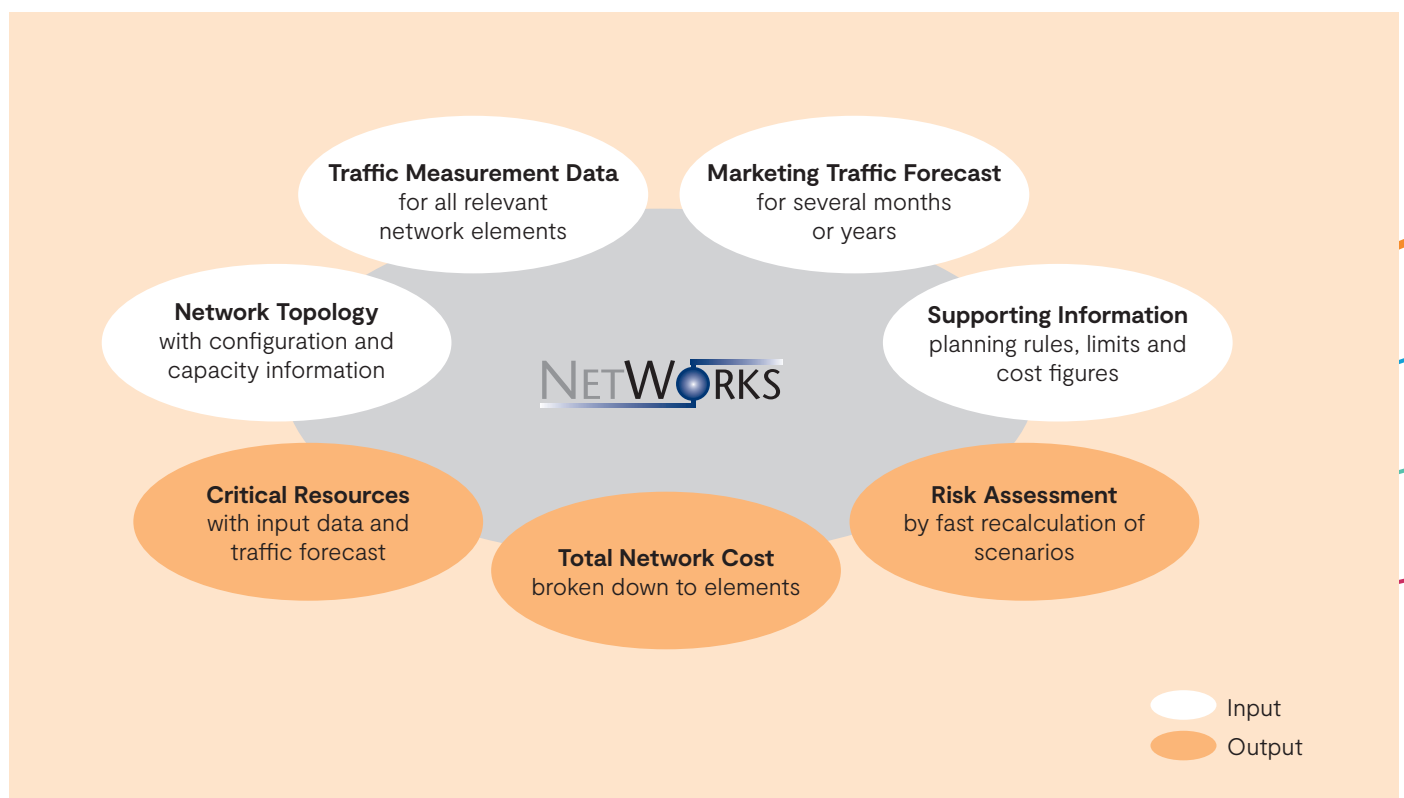
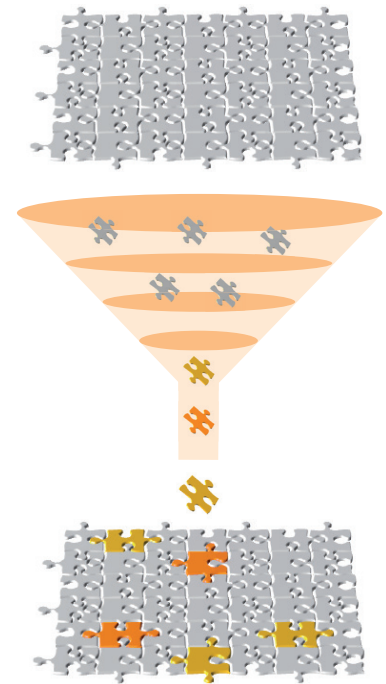
**NETWORKS** Mobile Forecast is a tool for analyzing current load of existing access, aggregation and core networks. It supports planning necessary extensions and thus optimizing network capacity management.

The tool provides a detailed view of the structure of your network in synchronized tables and graphs. Automated analyses of performance measurement data for long periods in time assure fast and reliable planning results. These results allow operators and carriers to reduce their investment and operational costs.

Generally capable to monitor network end-to-end capacity across technologies and network levels, the tool can be applied also to specific topics, e.g. mobile access network capacity management.

Planned capacity extensions can be prepared as regionalized reports supporting internal planning processes while providing an overview on the overall network health state.

For general features please refer to our flyer **NETWORKS** Product Portfolio.



# End-to-End Capacity Monitoring

Calculating required network capacities with detailed information about place of extension and point in time.

## Measurement Analysis

- > Import of measurement data of several days, weeks or months for thousands of network elements
- > Consideration of dependencies between network elements
- > Automated data processing
- > Graphical and tabular reports on overloaded network elements
- > KPI calculation and evaluation

## Future Network Utilization

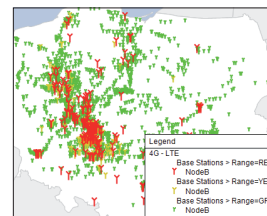
- >> Traffic Trending (e.g. linear regression model) for estimating future traffic based on imported measurements
- >> Evaluating dependencies between measurement counters and using this information for traffic forecasting
- >> Using marketing forecast figures to estimate required network extensions

### Detailed Lists

ID	Type	MeasuringData	Traf1 BitTr MBit/s	Dm1 Quantity (#CE_DL_Max)	Range
12008	NodeB-003068	NodeB	(44x8BitTr) -- (17...	6.06	768.00 GREEN
12009	NodeB-003069	NodeB	(44x8BitTr) -- (17...	46.05	1152.00 RED
12010	NodeB-003070	NodeB	(44x8BitTr) -- (17...	9.42	1152.00 GREEN
12011	NodeB-003071	NodeB	(44x8BitTr) -- (17...	22.45	1152.00 GREEN
12012	NodeB-003072	NodeB	(44x8BitTr) -- (17...	40.78	1152.00 YELLOW
12013	NodeB-003073	NodeB	(44x8BitTr) -- (17...	39.01	1152.00 GREEN

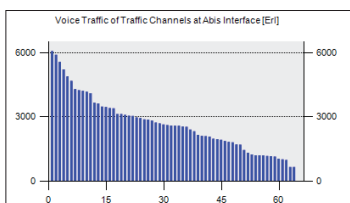
- > Prioritization of network elements
- > Configuration and capacity
- > Current and planned load

### Graphs



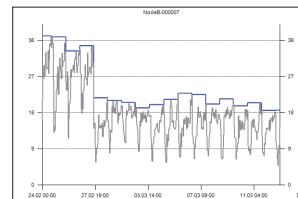
- > Checking spatial distribution of overload, e.g. detecting regional overload
- > Tracing technology rollout, e.g. monthly graph on LTE sites

### Key Performance Indicator



- > Overview of overall network performance
- > Automated reporting using customized graphs

### Measurement Analysis



- > Verifying planning result
- > "Deep dive" capability by combining measurement data, configuration information and capacity values

# Your Benefits

Mobile Forecast 9.5

NETWORKS Mobile Forecast supports network operators in identifying critical resources in the current network and in planning necessary network extensions.

## Automated Processing of Planning Data

- > By fully automated network calculation
- > With prepared controls for individual planning

## Consistent End-to-End Network Analysis and Planning

- > From access over aggregation to core level
- > For nodes and links, physical devices and pools

## Algorithmic Approach for Calculation/Optimization

- > Reduced runtime of network analyses
- > Analytical and heuristic methods for capacity planning

## Synchronized Tables and Views

- > For efficient evaluation of planning results
- > Consistent network documentation as graphs & lists

## Future Proof Software System

- > Multi-layer approach to combine different technologies
- > Flexible algorithms to extend calculation functions

We invite you to benefit from the advantages of analysis, planning and optimization with NETWORKS.

We look forward to your inquiry.

**NETWORKS**  
a product of **DETECON**

Detecon International GmbH  
Network Optimization & Tools  
Riesaer Straße 7  
01129 Dresden · Germany

Phone: +49 351 64890 111  
[Networks.Info@detecon.com](mailto:Networks.Info@detecon.com)  
[www.NetWorks.detecon.com](http://www.NetWorks.detecon.com)